



BLACKWATER CRUISE

19th – 25th Aug 2023

Colne and Blackwater

With John and Diana Foster – ‘March Hare’





BLACKWATER CRUISE

- **Outline itinerary:**

- **Sat 19th:** Boats depart Harwich area and take flood tide to Brightlingsea. SADs on the pontoon. Water taxi runs until 23:00
- **Sun 20th:** Day in Brightlingsea. Planned lunchtime trip to Rowhedge for shallow draft boats.
- **Mon 21st:** Depart for Heybridge Basin. Kubb tournament.
- **Tues 22nd:** Heybridge Basin. Optional canoe/dinghy trip for supplies for BBQ that evening. Planned entertainment after the BBQ
- **Weds 23rd:** Depart Heybridge basin for Bradwell. Cruise dinner in the Green Man
- **Thurs 24th:** Day in Bradwell. Walk to St Peter's chapel calling in to the Cricketers for lunch
- **Fri 25th:** Depart Bradwell for home ports. Clacton airshow in progress – possible to anchor off and watch if conditions permit.



BLACKWATER CRUISE

Maritime Buoyage System

date and limits of the chart are given in the title. The topography is derived from maps.

EXPERIMENTAL BUOYS

Experimental buoys are laid by Trinity House, and their positions are given in the title. They have no navigational value.

POSITION SCHEMES

Position Schemes are given in the title. Mariners No 17, which schemes are given in the title. Mariners No 17, which schemes are given in the title. Mariners No 17, which schemes are given in the title.

CHART BEDS

Chart Beds are given in the title. Mariners No 17, which schemes are given in the title. Mariners No 17, which schemes are given in the title.

CHANGING DEPTHS

Channel depths are continually changing. Consult the Port Control Centre, London for the latest information. Depths in the vicinity of drying banks and in the passages between them are also subject to continual change. Such passages should only be used with caution.

SATELLITE-DERIVED POSITIONS

Positions obtained from satellite navigation systems, such as the Global Positioning System (GPS), are normally referred to the World Geodetic System 1984 Datum. Such positions must be adjusted by 0.03 minutes SOUTHWARD and 0.10 minutes EASTWARD before plotting on this chart.

Example:

Satellite-Derived Position
(WGS 84 Datum) 51°35'50N, 001°42'50E
lat/long adjustments 0°03S 0°10E

Adjusted Position 51°35'47N, 001°42'60E
(compatible with chart datum)

CHARTS 3371 AND 2449-POSITIONS

To agree with smaller scale charts 3371 and 2449, which are referred to European Datum (1950), positions read from this chart should be moved 0.08 minutes NORTHWARD and 0.03 minutes WESTWARD.

CHANGING DEPTHS

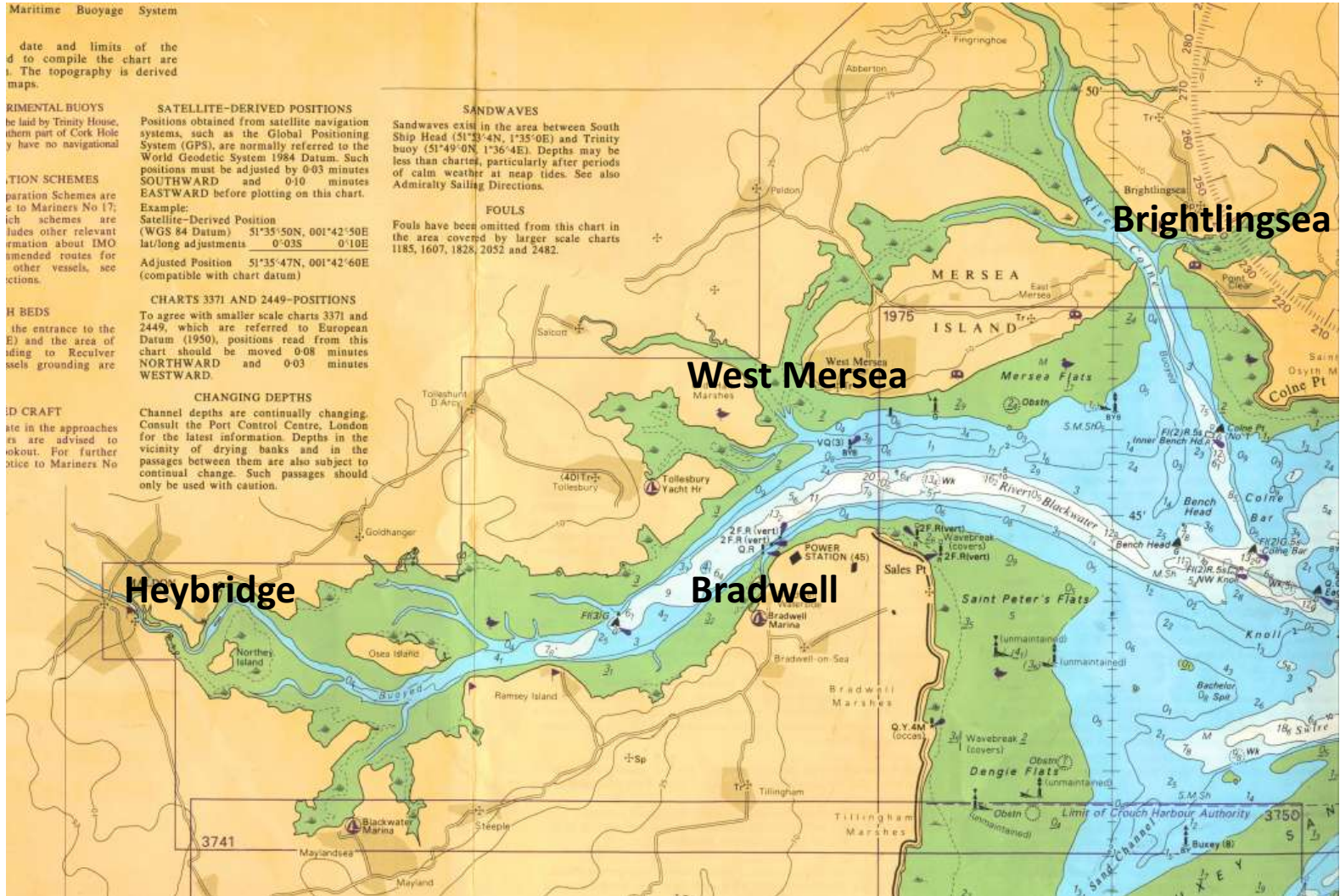
Channel depths are continually changing. Consult the Port Control Centre, London for the latest information. Depths in the vicinity of drying banks and in the passages between them are also subject to continual change. Such passages should only be used with caution.

SANDWAVES

Sandwaves exist in the area between South Ship Head (51°33'4N, 1°35'0E) and Trinity buoy (51°49'0N, 1°36'4E). Depths may be less than charted, particularly after periods of calm weather at neap tides. See also Admiralty Sailing Directions.

FOULS

Fouls have been omitted from this chart in the area covered by larger scale charts 1185, 1607, 1828, 2052 and 2482.





BLACKWATER CRUISE

Date	Cruising plan	Approx. distance	HW Harwich	Ht. of HW Harwich
19/8	Arrive Brightlingsea from Harwich area	24	14:24	4.0
20/8	Brightlingsea to Rowhedge round trip	9	14:54	4.0 (Springs)
21/8	Brightlingsea to Heybridge Basin	15	15:26	3.9
22/8	Heybridge	-	15:58	3.8
23/8	Heybridge to Bradwell	8	16:32	3.7
24/8	Bradwell	-	05:02 17:14	3.6
25/8	Bradwell to Harwich area	25	05:49 18:12	3.4 3.5



BLACKWATER CRUISE

- **SOME KEY POINTS**

- Booking ahead is essential at all locations in the busy summer season, so please book your place on the cruise well in advance
- Likewise we will need to make our bookings for the Green Man well in advance
- Lock capacity at Heybridge is a constraint on numbers/sizes of boats. To plan we will need your LOA, Beam and Draft – as requested on the booking slip. Mobile number also essential
- A detailed locking plan for Heybridge will be issued to skippers in advance – we must stick rigidly to this, subject only to variations dictated by the lock keeper on VHF. All boats must arrive off the lock entrance by 14:20 on the 15th August
- There is an exclusion zone and a dedicated anchorage off Clacton while the airshow is on.
- We have two more Kubb sticks this year, so the games should be a little quicker