

# RAMSGATE EUROPE CRUISE

4<sup>th</sup> to 12<sup>th</sup> AUGUST



WOODBIDGE  
CRUISING CLUB

# RAMSGATE EUROPE CRUISE WITH ANDY LARWOOD ON ABERRATION

**Fri 4<sup>th</sup> August**

**-HW Harwich 1430 BST**

-ETD 0700BST Harwich Shelf. 45nm to Ramsgate.

ETA 1530BST. Route: Stone Banks, Goldmer Gat, Black Deep, Foulgers or Fishermans Gat, NE Spit buoy, Elbow NCM, Ramsgate entry channel.

-SADS on the pontoon. Dinner at La Magnolia.

**Sat 5th August :**

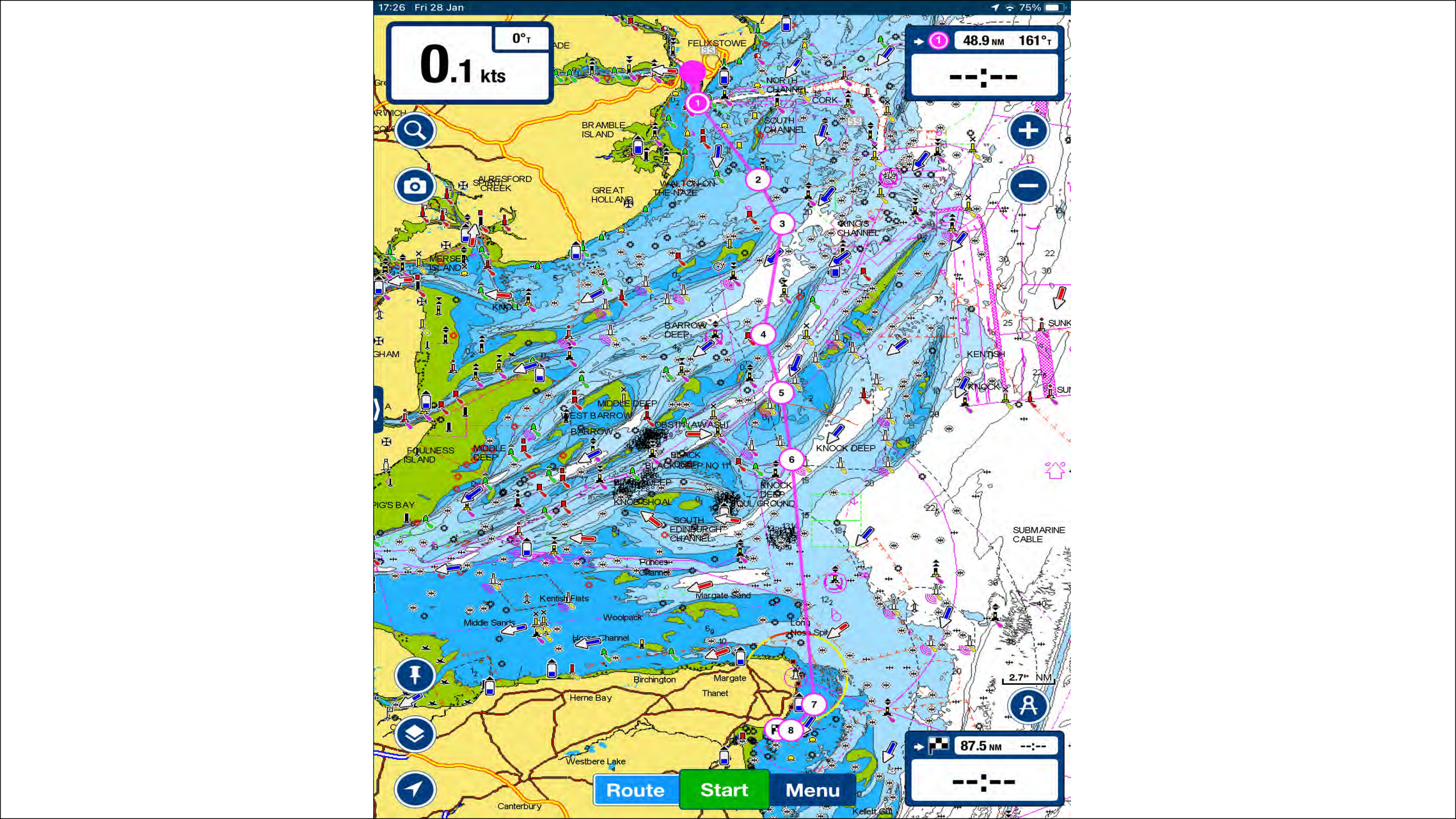
**-HW Dover 1430 BST**

-ETD 0700 52nm to Nieuwpoort

-ETA 1700

-Route: Stay north of the Goodwin sands, Goodwin Knoll, S.Falls, Sandettie W, Ruytingen N, Buiten Ratel, SYM-S, Nieuwpoort.

-Well protected long entrance channel. An all tide port except in strong Nwesterlies.



0.1 kts  
0°T

48.9 NM 161°T



Route Start Menu

87.5 NM

BRAMBLE ISLAND

ALRESFORD CREEK

MERSEY ISLAND

KNOLL

FOULNESS ISLAND

MIDDLE DEEP

PIG'S BAY

Kentish Flats

Middle Sands

Woolpack

Herne Bay

Westbere Lake

GREAT HOLLAND

WALTON ON THE NAZE

BARROW DEEP

MIDDLE DEEP

WEST BARROW

BARROW

OBSTACLE WASH

BLACK DEEP NO 11

BLACK DEEP

KNOCK SHOAL

SOUTH EDINBURGH CHANNEL

Birchington

Canterbury

FELIXSTOWE

NORTH CHANNEL

SOUTH CHANNEL

CORK

KING'S CHANNEL

BARROW DEEP

BLACK DEEP

KNOCK DEEP

KNOCK DEEP

SOUTH EDINBURGH CHANNEL

Margate

Thanet

Kellett

NORTH CHANNEL

SOUTH CHANNEL

CORK

KING'S CHANNEL

BARROW DEEP

BLACK DEEP

KNOCK DEEP

KNOCK DEEP

SOUTH EDINBURGH CHANNEL

Margate

Thanet

Kellett

Kellett

NORTH CHANNEL

SOUTH CHANNEL

CORK

KING'S CHANNEL

BARROW DEEP

BLACK DEEP

KNOCK DEEP

KNOCK DEEP

SOUTH EDINBURGH CHANNEL

Margate

Thanet

Kellett

Kellett

NORTH CHANNEL

SOUTH CHANNEL

CORK

KING'S CHANNEL

BARROW DEEP

BLACK DEEP

KNOCK DEEP

KNOCK DEEP

SOUTH EDINBURGH CHANNEL

Margate

Thanet

Kellett

Kellett

NORTH CHANNEL

SOUTH CHANNEL

CORK

KING'S CHANNEL

BARROW DEEP

BLACK DEEP

KNOCK DEEP

KNOCK DEEP

SOUTH EDINBURGH CHANNEL

Margate

Thanet

Kellett

Kellett

NORTH CHANNEL

SOUTH CHANNEL

CORK

KING'S CHANNEL

BARROW DEEP

BLACK DEEP

KNOCK DEEP

KNOCK DEEP

SOUTH EDINBURGH CHANNEL

Margate

Thanet

Kellett

Kellett

NORTH CHANNEL

SOUTH CHANNEL

CORK

KING'S CHANNEL

BARROW DEEP

BLACK DEEP

KNOCK DEEP

KNOCK DEEP

SOUTH EDINBURGH CHANNEL

Margate

Thanet

Kellett

Kellett

NORTH CHANNEL

SOUTH CHANNEL

CORK

KING'S CHANNEL

BARROW DEEP

BLACK DEEP

KNOCK DEEP

KNOCK DEEP

SOUTH EDINBURGH CHANNEL

Margate

Thanet

Kellett

Kellett

NORTH CHANNEL

SOUTH CHANNEL

CORK

KING'S CHANNEL

BARROW DEEP

BLACK DEEP

KNOCK DEEP

KNOCK DEEP

SOUTH EDINBURGH CHANNEL

Margate

Thanet

Kellett

Kellett

NORTH CHANNEL

SOUTH CHANNEL

CORK

KING'S CHANNEL

BARROW DEEP

BLACK DEEP

KNOCK DEEP

KNOCK DEEP

SOUTH EDINBURGH CHANNEL

Margate

Thanet

Kellett

Kellett

NORTH CHANNEL

SOUTH CHANNEL

CORK

KING'S CHANNEL

BARROW DEEP

BLACK DEEP

KNOCK DEEP

KNOCK DEEP

SOUTH EDINBURGH CHANNEL

Margate

Thanet

Kellett

Kellett

NORTH CHANNEL

SOUTH CHANNEL

CORK

KING'S CHANNEL

BARROW DEEP

BLACK DEEP

KNOCK DEEP

KNOCK DEEP

SOUTH EDINBURGH CHANNEL

Margate

Thanet

Kellett

Kellett

NORTH CHANNEL

SOUTH CHANNEL

CORK

KING'S CHANNEL

BARROW DEEP

BLACK DEEP

KNOCK DEEP

KNOCK DEEP

SOUTH EDINBURGH CHANNEL

Margate

Thanet

Kellett

Kellett

NORTH CHANNEL

SOUTH CHANNEL

CORK

KING'S CHANNEL

BARROW DEEP

BLACK DEEP

KNOCK DEEP

KNOCK DEEP

SOUTH EDINBURGH CHANNEL

Margate

Thanet

Kellett

Kellett

NORTH CHANNEL

SOUTH CHANNEL

CORK

KING'S CHANNEL

BARROW DEEP

BLACK DEEP

KNOCK DEEP

KNOCK DEEP

SOUTH EDINBURGH CHANNEL

Margate

Thanet

Kellett

Kellett

NORTH CHANNEL

SOUTH CHANNEL

CORK

KING'S CHANNEL

BARROW DEEP

BLACK DEEP

KNOCK DEEP

KNOCK DEEP

SOUTH EDINBURGH CHANNEL

Margate

Thanet

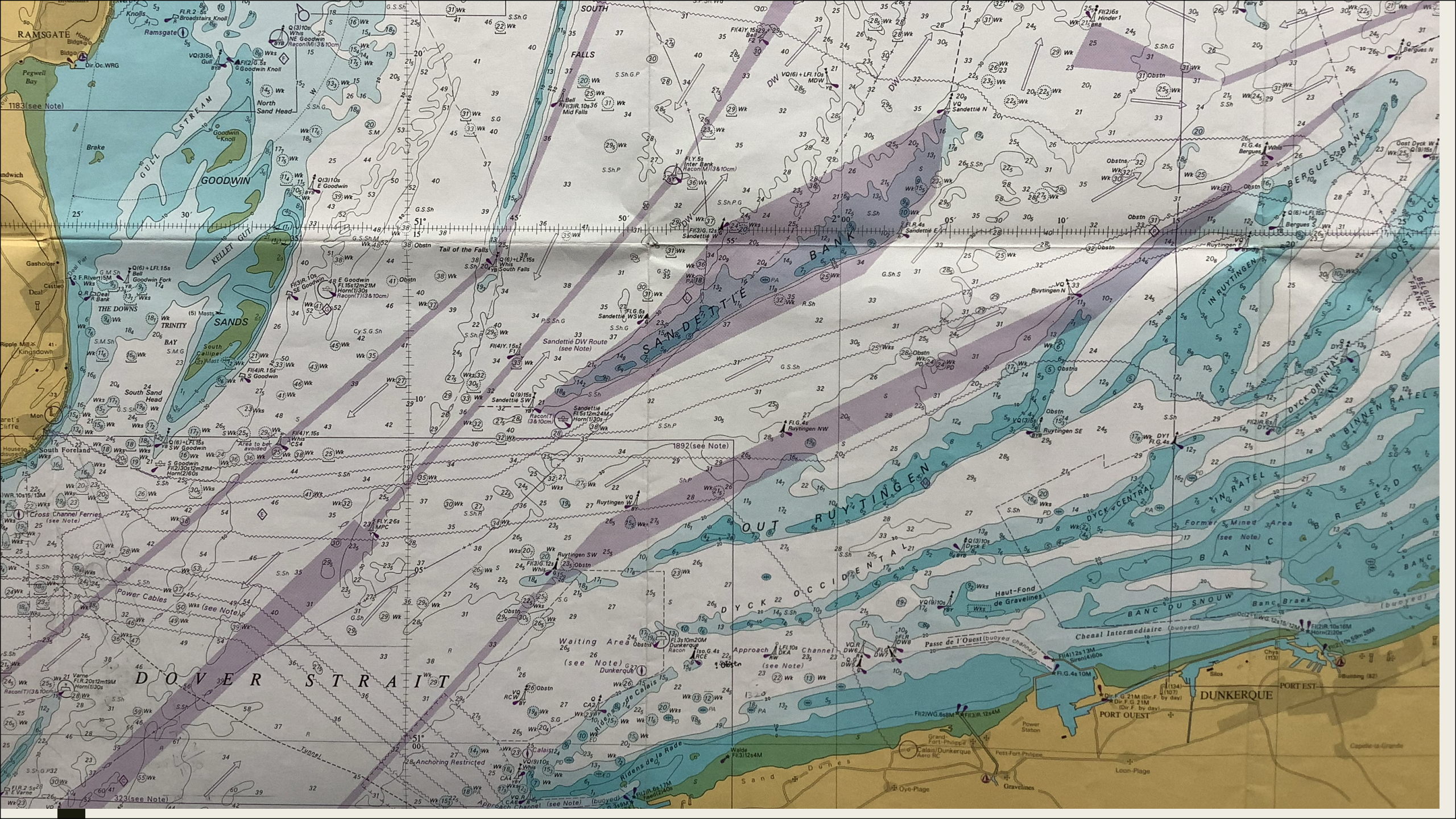
Kellett

Kellett

2.7 NM



87.5 NM





# Ramsgate Europe Cruise with Andy Larwood & Crew – Aberration

Sunday 6th August : Free day to explore Nieuwpoort

**Monday 7<sup>th</sup> August :**

**-HW Dover 1600 BST**

-ETD 0700. 10nm to Oostende

ETA 0900

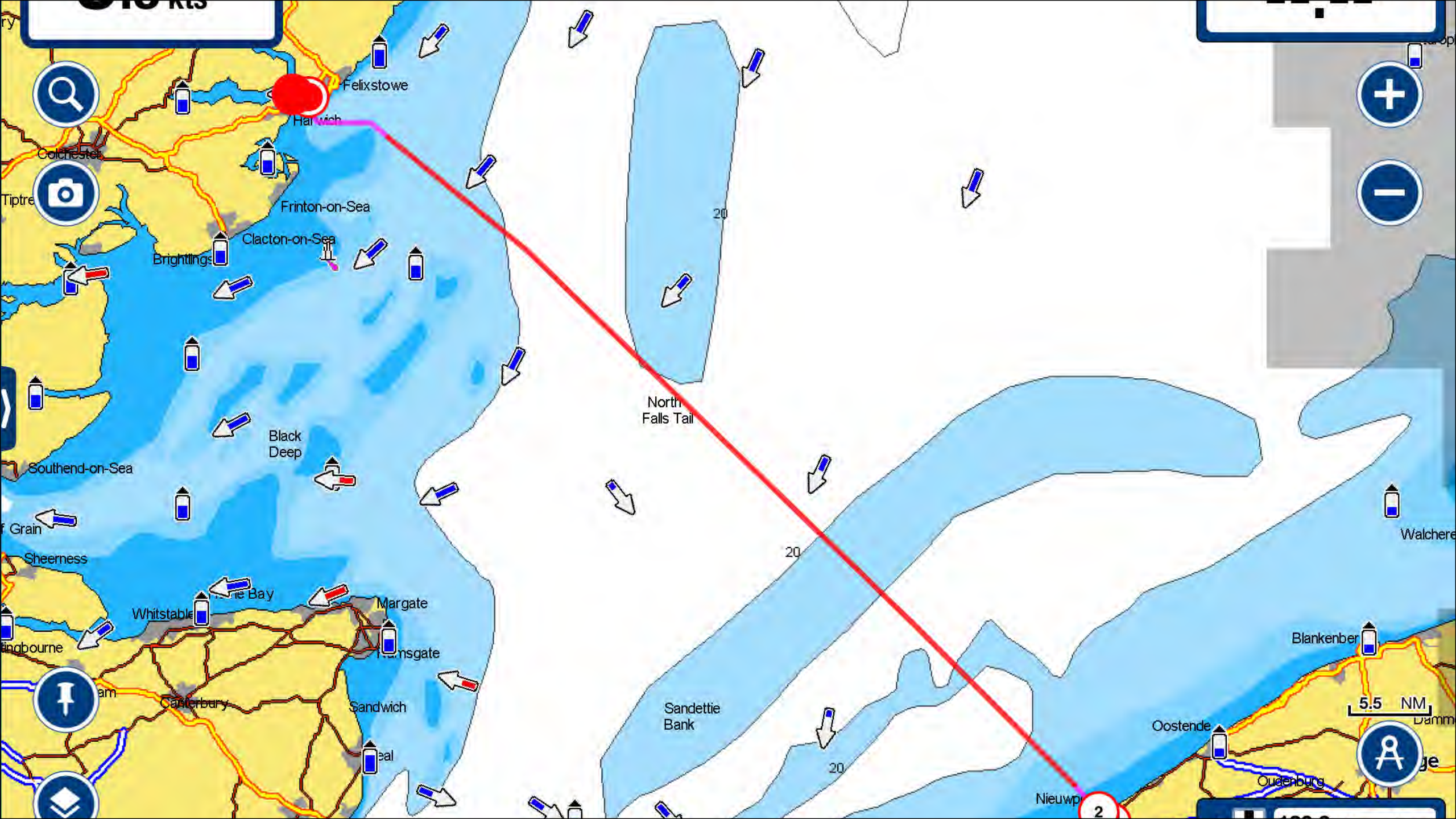
Sail along the coast to Oostende.

**Tuesday 8<sup>th</sup> August :**

**-HW Dover 1700 BST**

-ETD 0700 19nm to Cadzand marina, Holland

-ETA 1100



# Ramsgate Europe Cruise with Andy Larwood & Crew – Aberration

## **Wednesday 9<sup>th</sup> August :**

**-HW Dover 0530 BST**

-ETD 1000. 29nm to Nieuwpoort

ETA 1600

Route coastal.

## **Thursday 10<sup>th</sup> August :**

**-HW Dover 0630**

- Rest/reserve day in Nieuwpoort



# Ramsgate Europe Cruise with Andy Larwood & Crew – Aberration

## **Friday 11<sup>th</sup> August :**

**-HW Dover 0750 BST**

-ETD 0700 52nm to Ramsgate.

ETA 1700.

Route north of Goodwin Sands.

## **Saturday 12<sup>th</sup> August :**

**-HW Dover 0910 BST**

-ETD 0800 45nm to Harwich.

-ETA 1700

Favourable tide for 6 hrs.